



BUILDING FOR THE FUTURE

*A Campaign to Create a Permanent Home for
Palouse Prairie Charter School*



A NEW HOME FOR TOMORROW'S LEADERS

At Palouse Prairie Charter School, we have proven that a school is much more than a building. In makeshift classrooms in a converted furniture store, we have built a vibrant and nurturing educational community. It is a place where students think critically, inquire for themselves, and push courageously to try new things. We have made the most of our current facility over the past eight years, but now it is time to build a permanent home for this community of engaged learners and future leaders.

Our school is poised to put down roots as a center for authentic learning on the Palouse. We have signed a sale agreement for 3.25 acres of land on Palouse River Drive, near a future city park. We have an ambitious plan to build a new school designed to inspire the next generation of leaders, a place where students can exercise their bodies as well as their minds, gather as a community to share learning, and explore the natural world as an extension of the classroom.

EXPEDITIONARY LEARNING: AN ACTIVE EDUCATION

Palouse Prairie Charter School was founded by a group of parents and educators driven to create a home for authentic learning in Moscow. Using the Expeditionary Learning (EL) model, teachers emphasize high achievement through active inquiry, character growth, and teamwork. EL Schools promote academic rigor, exemplary character, and habits of scholarship through a consistent, active focus on ten design principles. These include The Having of Wonderful Ideas, Collaboration and Competition, and Service and Compassion.

The habits of scholarship—grit, responsibility, collaboration, and craftsmanship—are actively practiced and discussed by students and teachers. Students learn and practice real-world skills through “Expeditions,” cross-disciplinary inquiries that make content and skill standards come alive by connecting learning to authentic issues and needs. Students think and work like scientists, mathematicians, artists, journalists, and leaders by conducting research, consulting with experts, and sharing their findings with audiences beyond the classroom.

Palouse Prairie Charter School further bolsters these principles with a unique Adventure Program, through which all students—from the youngest kindergartener to the oldest eighth grader—participate in age-appropriate outdoor adventures including snowshoeing, skiing, hiking, rock-climbing, swimming, bicycling, and more. These day-long adventures encourage students to try new things and stretch their courage in safe and supportive experiences. Adventures connect students



PPCS 7th graders journal while conducting field work on Orcas Island. This trip, part of our “The Blackfish Effect” Expedition, challenged students to explore the cultural and ecological importance of orcas in the Pacific Northwest.

meaningfully with the natural world and introduce them to activities that they can continue to enjoy throughout their lives.

Our students are rigorous thinkers, persistent questioners, brave adventurers, compassionate citizens, and engaged community members. Although we never “teach to the test,” they consistently test among the best students in our region. According to data from a 2013 study, 100% of schools that had been in the EL network for ten years or more consistently outperformed other schools in their districts in both reading and math.

A BETTER SPACE FOR AUTHENTIC LEARNING

After opening our doors in the fall of 2009 with 70 students in kindergarten through fifth grade, we have added a thriving middle school program, increased enrollment to 190 students, and become one of the highest performing charter schools in Idaho. Our strategic approach to growth has helped us expand our community within our limited means while maintaining the highest educational standards. And we have done all this on a shoestring budget! As a public charter, we are not able to take advantage of direct funds from tax levies. This means that we do our work with less funding per pupil than other schools in our region.

As our school matures and continues to grow, the time is right for a permanent facility that better meets the needs of our community of learners. Our current home, a former furniture store, is not ideal for the kind of hands-on, minds-on education that PPCS employs, and we lack the outdoor space needed for students to energize their bodies while they exercise their minds. The next step on this journey is a new, more intentional facility. We need a school building and grounds that support and exemplify the incredible learning at the heart of our community, a place where our students and our school can continue to thrive for many years to come.



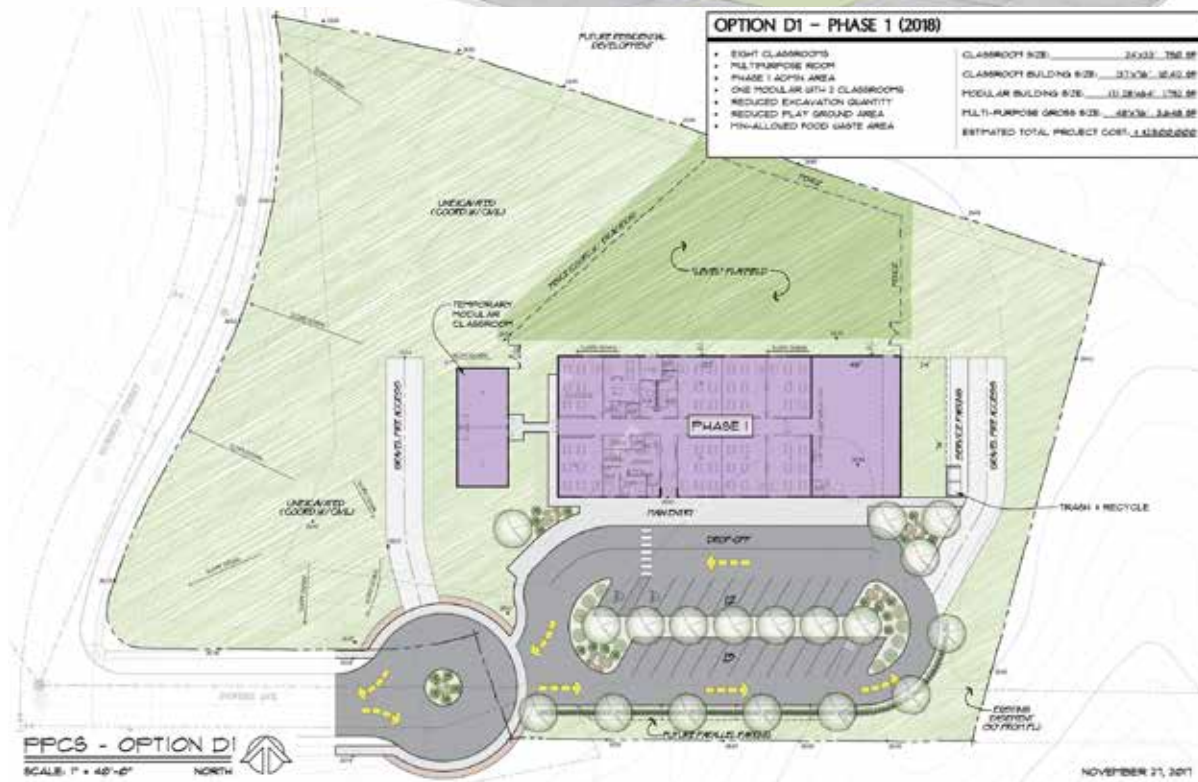
PPCS students build strong literacy and writing skills, along with habits of scholarship, by revising their work using rigorous criteria and support from peers.

Our new facility will offer a safe and spacious learning environment focused on student achievement. It will include a simple energy efficient building with healthy indoor air quality, designed with sustainable features and natural light. Outside, students will be able to explore and exercise in large, open play areas adjacent to a future city park. A separate building will serve as a cafeteria and gym space, as well as a multi-purpose room to accommodate our school gatherings and special programming. We anticipate making full and active use of the entire property with native plant gardens, quiet spaces for solitude and reflection, and functional artwork.

The new school location is ideally situated to serve the community. It will be the only school located in the southern part of Moscow, and close to the university and student-family housing.

TO INFINITY AND BEYOND

Sharing with the community is a big part of Expeditionary Learning. During a third grade expedition, Palouse Prairie students conducted a scientific study of the celestial bodies of our solar system. In this expedition, students drew from mathematics, science, literature, and art to learn the history, tools, and techniques of astronomy. Their culminating event was a student-led science enrichment day at the Palouse Discovery Science Center. Students taught guests about Mars Rovers, how to draw realistic planets, shared their astronomy books, displayed an amazing painted solar system, and much more. All presentations, art, and publications were created by students to educate the community of the Palouse. Our new school facility will provide more opportunities and community connections.



SITE PLAN

THE RIGHT TIME FOR A BOLD STEP

Through careful financial management, we have saved enough money to purchase 3.25 acres of land for the new campus. We have identified financing for the bulk of our building costs, and now only have to fundraise for a down payment of \$400,000 so that we can ensure a responsible monthly mortgage and begin breaking ground.

With your help, we can create a lasting legacy of thoughtful learning on the Palouse. Your contribution will help establish a permanent center for authentic, hands-on learning that holds students to the highest academic standards while preparing them to be active, engaged citizens.

To learn more about our campaign and how you can be a part of building something great, please call Jeneille Branen, Executive Director, at (208) 882-3684. Gifts of cash, appreciated stock, and other assets are welcome and tax-deductible.



**PALOUSE PRAIRIE
CHARTER SCHOOL**

nurturing minds | inspiring leaders

1500 S Levick St, Moscow, ID 83843

(208) 882-3684

www.palouseprairieschool.org



www.facebook.com/PPCS.org